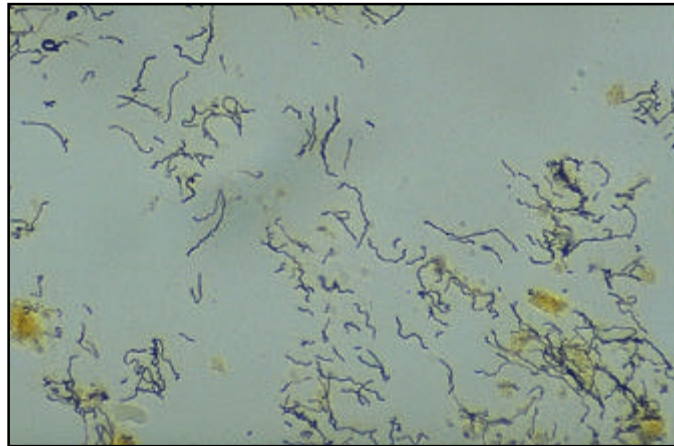


MICROGEN BIOPRODUCTS LTD



MERCIA SYPHILIS M

MERCIA SYPHILIS M (M404CE) IS AN ANTIBODY CLASS CAPTURE IMMUNOSORBENT ASSAY FOR THE DETECTION OF *TREPONEMA PALLIDUM*-SPECIFIC IGM IN HUMAN SERUM.

Features include:

- Suitable for serum
- Flexible 8 well strip format
- IgM capture technology – reduces interference from rheumatoid factor or co-specific IgG
- Colour coded reagents
- Ready-to-use controls.
- Excellent discrimination between positives and negatives
- Suitable for automation.
- Assay time < 3 hours.

Protecting Food and Health

MICROGEN BIOPRODUCTS LTD

1 Admiralty Way
Camberley
Surrey
GU15 3DT
United Kingdom

Phone: +44 (0)1276 600081
Fax: +44 (0)1276 600151
E-mail: sales@microgenbioproducts.com
www.microgenbioproducts.com



Mercia Syphilis M is an antibody class capture immunosorbent assay for the detection of *Treponema pallidum*-specific IgM in human serum.

Rabbit antibody specific for the μ -chain of IgM antibodies is coated to the solid phase of the microtitre plate wells.

These antibodies will bind specifically to human IgM present in each serum.

Purified *T. pallidum* antigens labelled covalently to peroxidase (the conjugate) will complex with captured *T. pallidum*-specific IgM. The conjugate will act as the indicator for the immunological reaction between the *T. pallidum* antigen in the conjugate and the *T. pallidum*-specific human IgM captured on the microtitre plate wells.

TMB that acts as a chromogen will produce colour proportionally to the amount of *T. pallidum*-specific IgM captured.

The chronic infection Syphilis is caused by the spirochaete *Treponema pallidum*. *T. pallidum*-specific IgM serum levels are related to disease activity. In the late phases of Syphilis, serum IgM remains detectable and successful treatment in the primary phase shows a more rapid decrease in IgM than in later phases. A significant decrease in IgM can be expected 3-4 months following treatment and will usually disappear within 2 years. The Mercia Syphilis M can be used in conjunction with Syphilis IgG assays to provide differential diagnosis between past and active syphilis infection

Comparison of 2 Commercial Assays

•Mercia Syph M evaluation, West Mead Hospital, NSW, Australia (Dr Jo Backhouse)

Category	Status	No. sera	Mercia M	CAPTIA
Primary	Untreated	15	14	12
Primary	Treated	10	4	3
Secondary	Untreated	19	18	15
Secondary	Treated	16	9	3
Latent	Untreated	22	13	9
Latent	Treated	6	4	2
	Total:	88	62	44
Potential Cross Reactors		45	2	0

Code	M404CE
Description	Mercia Syphilis M
Size	96T
Storage	2-8°C