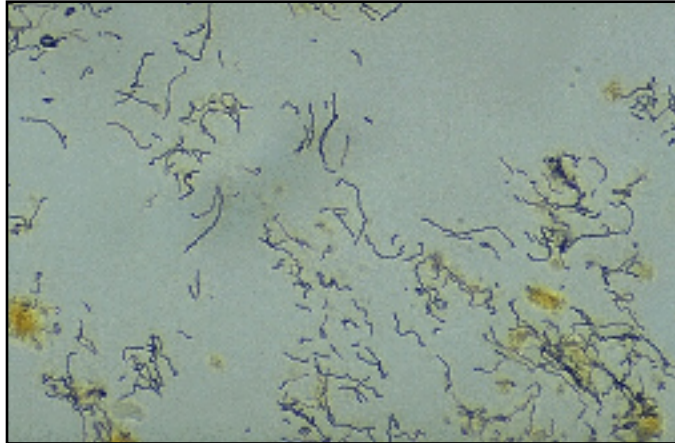


MICROGEN BIOPRODUCTS LTD



SYPHILIS RANGE

- **MERCIA SYPHILIS SCREEN (M403/4033) IS A COMPETITIVE ENZYME IMMUNOASSAY FOR THE DETECTION OF TOTAL ANTIBODIES SPECIFIC FOR *TREPONEMA PALLIDUM***
- **MERCIA SYPHILIS M (M404CE) IS AN ANTIBODY CAPTURE IMMUNOSORBENT ASSAY FOR THE DETECTION OF *TREPONEMA PALLIDUM* SPECIFIC IGM IN HUMAN SERUM.**
- **INNO-LIA SYPHILIS (80045) IS A LINE IMMUNOASSAY FOR THE CONFIRMATION OF ANTIBODIES TO *TREPONEMA PALLADIUM* IN HUMAN SERUM OR PLASMA.**

Protecting Food and Health

MICROGEN BIOPRODUCTS LTD

1 Admiralty Way
Camberley
Surrey
GU15 3DT
United Kingdom

Phone: +44 (0)1276 600081
Fax: +44 (0)1276 600151
E-mail: sales@microgenbioproducts.com
www.microgenbioproducts.com



Microgen Bioproducts Ltd offers a range of tests for the detection of antibodies specific for the spirochaete *Treponema pallidum* which causes Syphilis. The range includes the screening assay Mercia Syphilis-TA, which is a competitive EIA for the detection of total antibodies specific for *T. pallidum* in human serum or plasma. The range also includes Mercia Syphilis M, an antibody capture immunosorbant assay for *T. pallidum* specific IgM, which relates to active Syphilis infection. Mercia Syphilis M can be used in conjunction with Mercia Syphilis-TA to provide differential diagnosis between past and active disease. The range is completed by the INNO-LiA Syphilis assay, a line immunoassay, which provides an important tool for the clarification of doubtful results:

- **MERCIA SYPHILIS TA (M403/4033CE)** is a competitive enzyme immunoassay intended for the detection of total antibodies specific for *Treponema pallidum*:
 - Suitable for serum or plasma
 - Sensitivity: 100%
 - Specificity: 100%
 - Colour coded reagents
 - Ready-to-use controls.
 - Excellent discrimination between positives and negatives
 - Suitable for automation.

- **MERCIA SYPHILIS M (M404CE)** is an antibody class capture immunosorbent assay for the detection of *Treponema pallidum* specific IgM in human serum:
 - Suitable for serum
 - Flexible 8 well strip format
 - IgM capture technology – reduces interference from rheumatoid factor or co-specific IgG
 - Colour coded reagents
 - Ready-to-use controls.
 - Excellent discrimination between positives and negatives
 - Suitable for automation.
 - Assay time < 3 hours.

- **Inno-LiA Syphilis (80045)** is a line immunoassay for the confirmation of antibodies to *Treponema palladium* in human serum or plasma:
 - High sensitivity: 100% (683/683)
 - High specificity on clinical and potentially interfering samples: 99.5% (655/658)
 - No false positive reactions with potential cross-reactive pathological samples (Lyme barreliosis, autoimmune, Epstein-Barr virus, HIV, pregnancy),
 - Colour-coded reagents
 - Ready-to-use reagents
 - Suitable for automation

Code	M403/4033CE
Description	Mercia Syphilis Syphilis-TA
Size	96T/960T
Storage	2-8°C

Code	M404CE
Description	Mercia Syphilis M
Size	96T
Storage	2-8°C

Code	80045
Description	Inno-LIA Syphilis
Size	20T
Storage	2-8°C