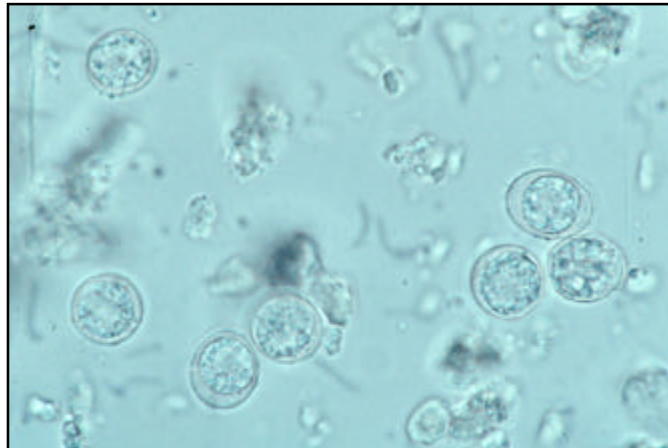


MICROGEN BIOPRODUCTS LTD



MERCIA TOXOPLASMA M M408CE

MERCIA TOXOPLASMA-M IS AN ANTIBODY CLASS CAPTURE IMMUNOSORBENT ASSAY FOR THE DETECTION OF TOXOPLASMA-SPECIFIC IGM IN HUMAN SERUM

Features include:

- Suitable for serum
- Flexible 8 well strip format
- IgM capture technology – reduces interference from rheumatoid factor or co-specific IgG
- Colour coded reagents
- Ready-to-use controls.
- Excellent discrimination between positives and negatives
- Suitable for automation.
- Assay time < 3 hours.

Protecting Food and Health

MICROGEN BIOPRODUCTS LTD

1 Admiralty Way
Camberley
Surrey
GU15 3DT
United Kingdom

Phone: +44 (0)1276 600081
Fax: +44 (0)1276 600151
E-mail: sales@microgenbioproducts.com
www.microgenbioproducts.com



Mercia Toxoplasma-M is an antibody class capture immunosorbent assay for the detection of Toxoplasma-specific IgM in human serum.

Rabbit antibody specific for the μ -chain of human antibodies is coated on the wells of microtitre plates. These antibodies will bind specifically to any human IgM present in the diluted sample.

Purified Toxoplasma antigens labelled covalently to peroxidase (conjugate) will complex to the captured Toxoplasma-specific IgM.

The conjugate acts as the indicator for the immunological reaction between the Toxoplasma antigen in the conjugate and the Toxoplasma-specific human IgM captured on the wells of the microtitre plate.

TMB that acts as a chromogen will give colour proportionally to the amount of Toxoplasma-specific IgM captured.

Toxoplasmosis is a systemic disease in animals and humans caused by the parasite *Toxoplasma gondii*. In normal adults the infection is typically asymptomatic but in pregnancy, maternal infection can result in congenital Toxoplasmosis. It is generally accepted that women who are immune to *T. gondii* prior to pregnancy will not pass disease to the foetus. Women who contract primary Toxoplasmosis during pregnancy may end up with devastating damage to the developing child. In IgM capture assays the Toxoplasma-specific IgM signal decreases earlier when compared to indirect assays giving a more precise indication of current or recent infection.

Comparison of 2 Commercial Assays

	Mercia Toxo M		Sorin	
	Pos	Neg	Pos	Neg
Pos	19	1*	20	0
Neg	1	161	3	159
Sens	95%		100%	
Spec	99%		98%	
Accuracy	98.8%		94.4%	

Code M408CE
Description Mercia Toxoplasma M
Size 96T
Storage 2-8°C