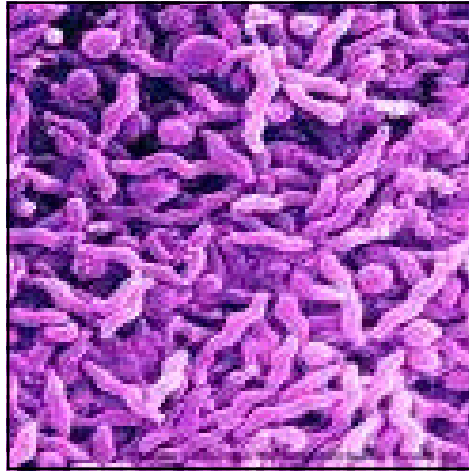


## MICROGEN BIOPRODUCTS LTD

---



# MICROGEN<sup>®</sup> CAMPYLOBACTER RAPID TEST

A RAPID TEST FOR THE CONFIRMATORY IDENTIFICATION OF ENTEROPATHOGENIC,  
THERMOPHILIC CAMPYLOBACTER GROWN ON SELECTIVE MEDIA

BASED ON PROVEN AND RELIABLE LATEX AGGLUTINATION TECHNOLOGY, THE  
MICROGEN BIOPRODUCTS CAMPYLOBACTER CULTURE CONFIRMATION ASSAY OFFER:

RESULTS IN TWO MINUTES

INCREASED EFFICIENCY

HIGH SENSITIVITY

HIGH SPECIFICITY

ACCURATE & RELIABLE RESULTS

**Protecting Food and Health**

---

### MICROGEN BIOPRODUCTS LTD

1 Admiralty Way  
Camberley  
Surrey  
GU15 3DT  
United Kingdom

Phone: +44 (0)1276 600081  
Fax: +44 (0)1276 600151  
E-mail: [sales@microgenbioproducts.com](mailto:sales@microgenbioproducts.com)  
[www.microgenbioproducts.com](http://www.microgenbioproducts.com)



*Campylobacter* gastro-enteritis is most prevalent in young children, but outbreaks are also common in adults. In temperate climates the incidence of *Campylobacter* gastro-enteritis peaks in summer and early autumn, whereas in tropical climates peak incidences may occur in the cooler months. *Campylobacter* infection may be effectively treated with antibiotics but in the majority of cases, due to the length of time required by traditional detection methods, the acute phase has passed by the time a laboratory diagnosis is communicated to the physician. Microgen® *Campylobacter* is a rapid, easy-to-use test which can be reliably performed on selective agar colonies. Microgen® *Campylobacter* can therefore reduce the time taken to produce a laboratory diagnosis and improve patient prognosis.

Microgen *Campylobacter*...

- Detects *Campylobacter* from solid selective media.
- Permits the early detection of *Campylobacter* gastro-enteritis enabling appropriate therapy to commence immediately, thereby improving patient prognosis.
- Is highly specific so that a presumptive identification can be reliably formed on the basis of the Microgen® test alone.

Microgen *Campylobacter* Rapid Test detects:

- *C. jejuni*
- *C. jejuni* subsp. *Doylei*
- *C. coli*
- *C. upsaliensis*
- *C. laridis*
- *C. fetus*

Microgen *Campylobacter* rapid test is part of a range of rapid tests which includes;

Microgen <i>C. difficile</i>	(M41CE)
Microgen Salmonella	(M42CE)
Microgen Staph	(M43CE & M433CE)
Microgen <i>E. coli</i> 0157	(M44CE)
Microgen Legionella	(M45CE)
Microgen <i>Campylobacter</i>	(M46CE)
Microgen Strep	(M47CE)

All rapid tests use latex agglutination technology.

<b>Code</b>	M46CE
<b>Description</b>	Microgen® <i>Campylobacter</i>
<b>Size</b>	50 tests
<b>Storage</b>	2 - 8°C